

*Le fleur*

Handwritten musical score for 'Le fleur'. The score is written on two staves. The top staff is in treble clef with a key signature of one flat (B-flat) and a time signature of 4/8. The bottom staff is in bass clef. The music consists of a series of eighth and sixteenth notes, with some rests and a final double bar line.

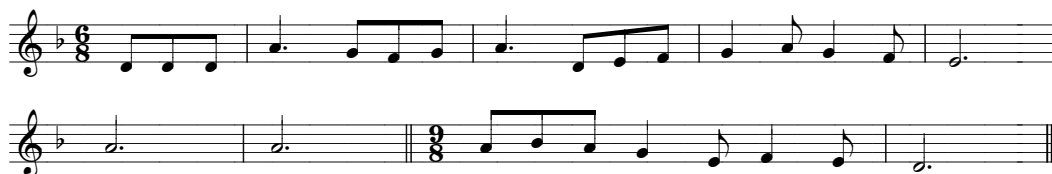
*Le Bambouler*

Handwritten musical score for 'Le Bambouler'. The score is written on two staves. The top staff is in treble clef with a key signature of one flat (B-flat) and a time signature of 4/8. The bottom staff is in bass clef. The music consists of a series of eighth and sixteenth notes, with some rests and a final double bar line.

*Air breton*

Handwritten musical score for 'Air breton'. The score is written on three staves. The top staff is in treble clef with a key signature of one flat (B-flat) and a time signature of 4/8. The middle and bottom staves are in bass clef. The music consists of a series of eighth and sixteenth notes, with some rests and a final double bar line. There are some markings above the notes, possibly indicating dynamics or articulation.

*Grisevad, Pier, galant, galant.  
Pisevad Pier, mar dokh koutant.*

*Er peur**Er bambocher**Grès mad, Pier*

Musical notation for 'Grès mad, Pier' in G major, featuring a complex time signature of 3/4, 2/4, 3/4, and 2/4. The first staff contains the melody, and the second staff contains the accompaniment. The piece concludes with a double bar line.

Grè - s mad Pi -  
er ga - land, ga - land, grè - s mad Pi - er, mar doh kou - tant.